

U.S. Army Public Health Center

# Army Influenza Activity Report

Week ending 6 February 2021 (Week 5)

## Influenza Vaccination Coverage\*

As of 10 February 2021

91%	Army Active Duty
80%	Army Guard
87%	Army Reserve

\*Data Source: MEDPROS

Click to enlarge images.

## SUMMARY

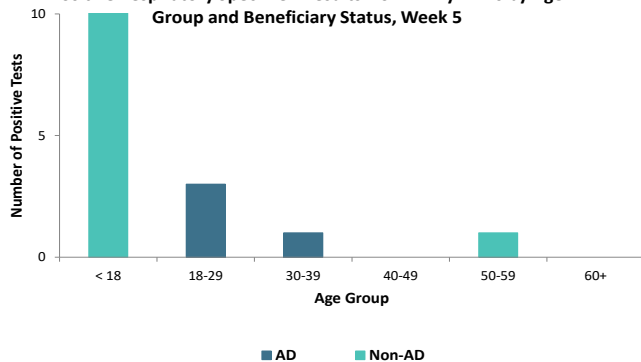
Influenza activity remains low in the Army population. The proportion of positive influenza A specimens for the Army in week 5 is 0.1%, which is significantly lower than that of the 2019-2020 season (21.8%) for the same time period. No hospitalizations were reported in week 5; the season total thus far is four compared to 166 influenza-associated hospitalizations reported as of this time last season. Individuals younger than 18 were most affected by select respiratory illnesses in the Army population; 75% (n=15) of positive specimens were collected from this age group. Nationwide, influenza activity is low with 0.1% of specimens tested by clinical laboratories being positive for influenza.

## GEOGRAPHIC SPREAD

Data on the geographical spread of influenza is unavailable this season due to the COVID-19 pandemic. For information from previous seasons and additional information about nationwide influenza surveillance, please visit the Centers for Disease Control and Prevention's website by clicking [here](#).

## DEMOGRAPHICS

Positive Respiratory Specimen Results from Army MTFs by Age Group and Beneficiary Status, Week 5

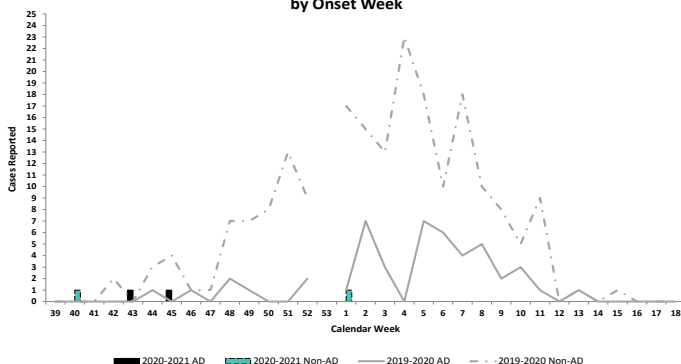


**AD:** Four positive respiratory specimens were collected from active duty (AD) Service members during week 5; they were collected from individuals in the 18-29 (n=3) and 30-39 (n=1) age groups.

**Non-AD:** Sixteen positive respiratory specimens were collected from non-AD individuals during week 5; 94% (n=15) were from those under 18 years of age and 6% (n=1) were collected from individuals in the 50-59 age group.

## INFLUENZA-ASSOCIATED HOSPITALIZATIONS

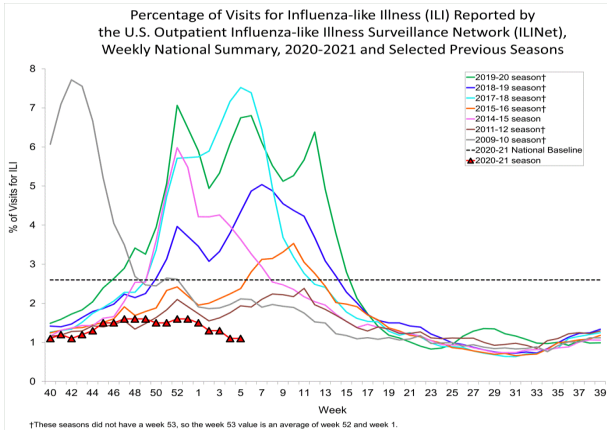
Army Influenza-Associated Hospitalizations Reported in DRSi by Onset Week



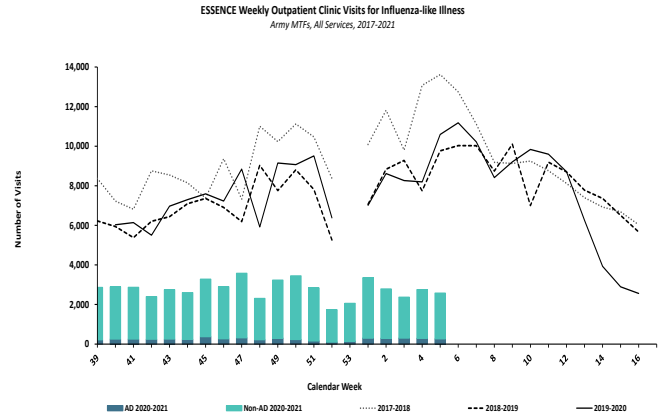
No influenza-associated hospitalizations with onset dates in week 5 were reported to the Disease Reporting System internet (DRSi); four hospitalizations have been reported for the entire season thus far. During the 2019-2020 season, 25 hospitalizations were reported in week 5 (with 166 hospitalizations reported from start of the season through week 5).

\*DRSi does not capture cases older than 65 years old for influenza-associated hospitalizations.

**ILI ACTIVITY - UNITED STATES**

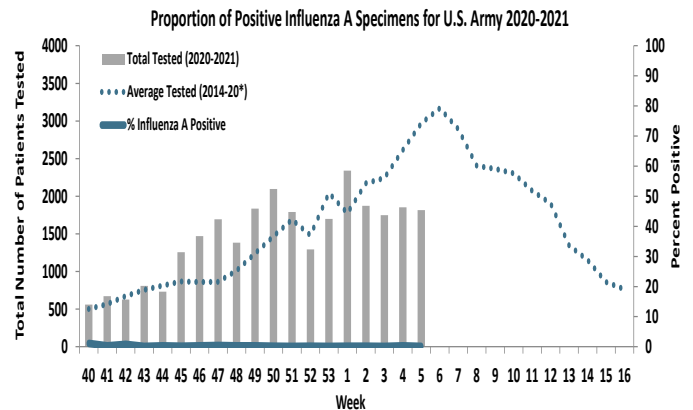
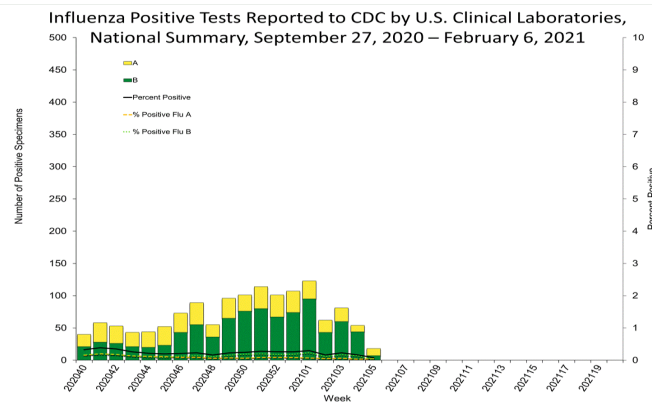


**ILI ACTIVITY - ARMY**



Nationwide in week 5, incident ILI activity was 1.1%; this is below the national baseline of 2.6%. At Army medical treatment facilities, incident ILI activity decreased by 6% from week 4 to week 5. The majority of ILI encounters (90%) occurred among non-AD patients in week 5.

**LABORATORY RESPIRATORY SPECIMEN TESTING**



Nationwide during week 5, a total of 24,201 specimens were tested for influenza by select clinical laboratories and submitted to CDC; 18 (0.1%) were positive. Influenza A accounted for 61.1% (n=11) of the total positive specimens. In the Army population, 0.1% of 1,815 specimens tested for influenza A were positive in week 5.

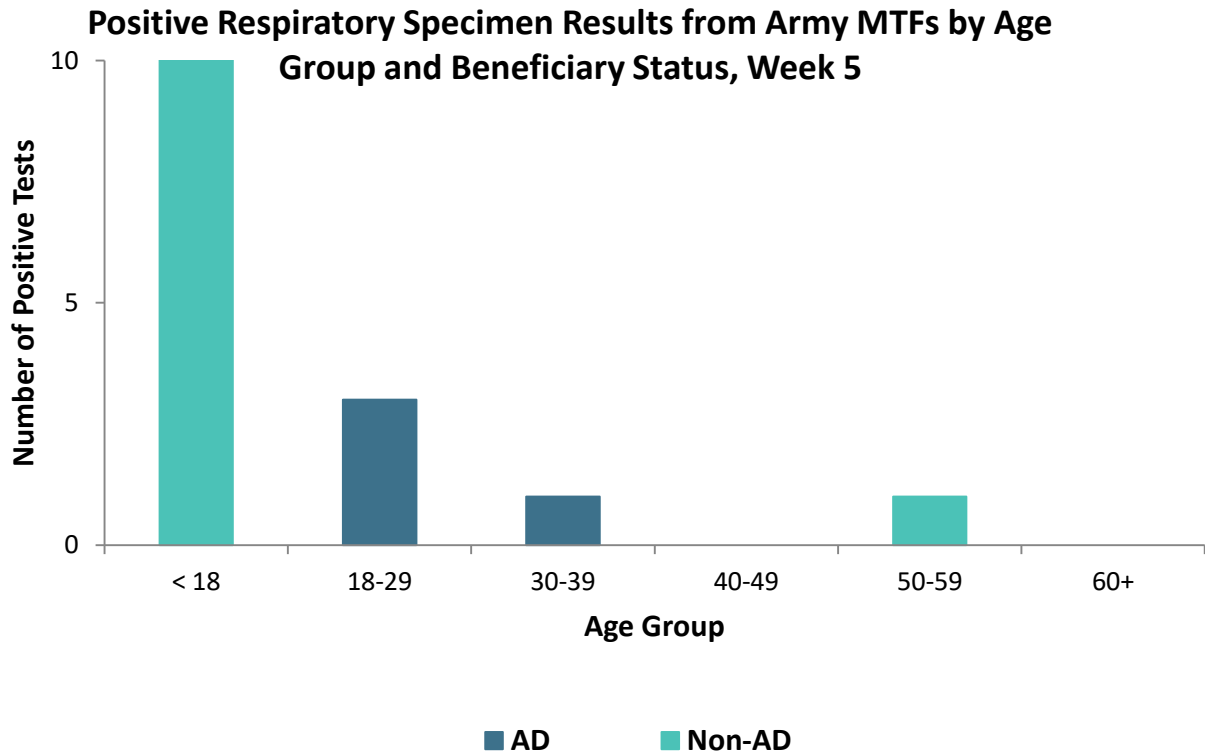
		Week 2	Week 3	Week 4	Week 5	Season Total
Army MTF Laboratory Results, 2020-21	Influenza A	4	1	6	2	72
	Influenza B	3	1	2	6	72
	Adenovirus	3	2	0	1	57
	Enterovirus	14	14	9	10	244
	Parainfluenza	1	0	1	0	9
	RSV	2	0	0	1	33
	Negative	4,149	4,007	4,027	4,246	64,899
	<b>Total</b>	<b>4,176</b>	<b>4,025</b>	<b>4,045</b>	<b>4,266</b>	<b>65,386</b>

Of the 4,266 specimens tested in week 5, less than 1% (n=20) were positive for any type of respiratory illness. Rhinovirus/enterovirus accounted for 50% (n=10) of positive specimens, influenza B for 30% (n=6), influenza A for 10% (n=2), and adenovirus and respiratory syncytial virus (RSV) each accounted for 5% (n=1).

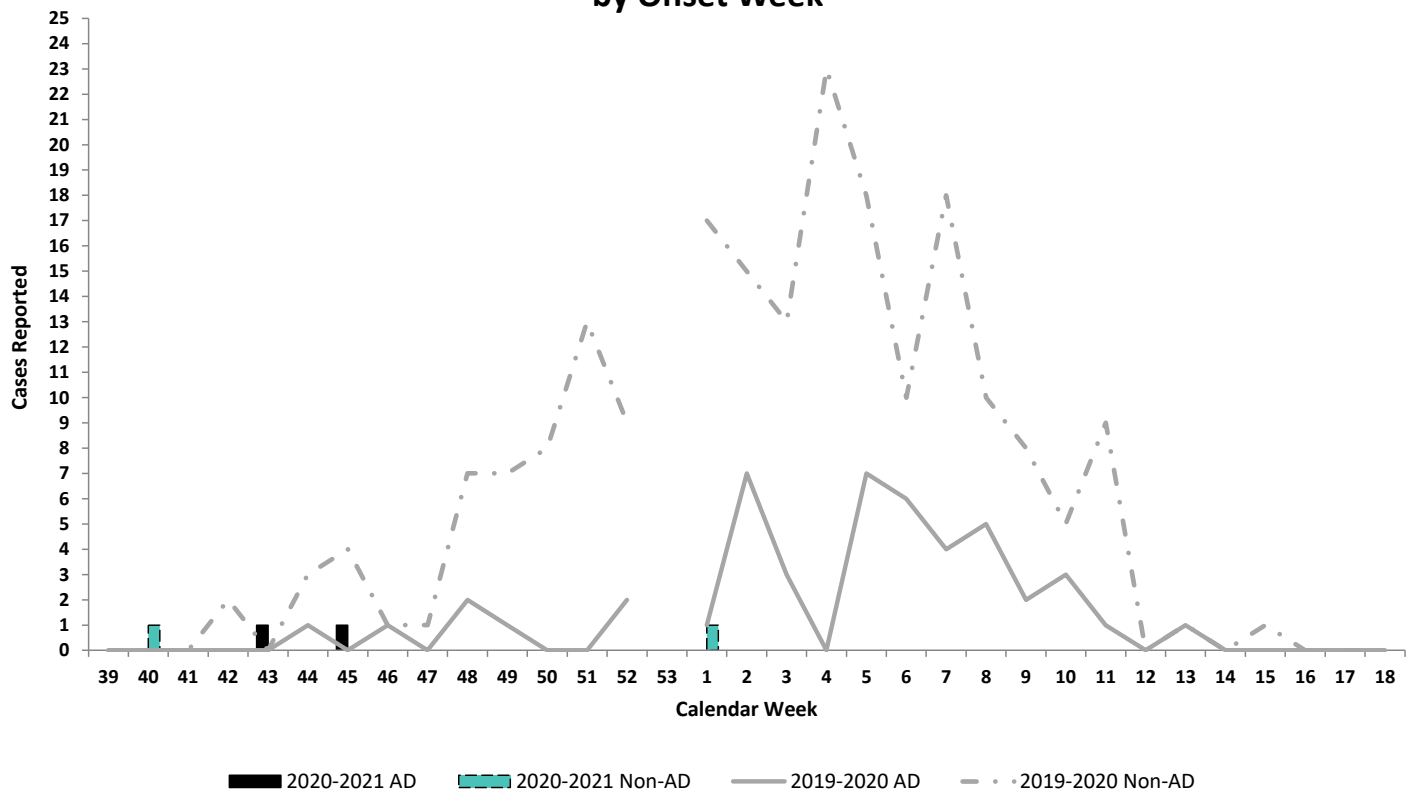
Additionally, the reported number of specimens tested increased by 5% since week 4 (n=4,045).

**Locations providing week 5 laboratory data as of 10 February 2021:** Ft Belvoir, Ft Benning, Ft Bliss, Ft Bragg, Ft Campbell, Ft Carson, Ft Eustis, Ft Gordon, Ft Hood, Ft Huachuca, Ft Jackson, Ft Knox, Ft Lee, Ft Leonard Wood, Ft Lewis, Ft Meade, Ft Polk, Ft Riley, Ft Rucker, Ft Sam Houston, Ft Sill, Ft Stewart, Ft Wainwright, Korea, Landstuhl Regional Medical Center, Redstone Arsenal, Tripler Army Medical Center, the U.S. Military Academy, and Walter Reed National Military Medical Center.

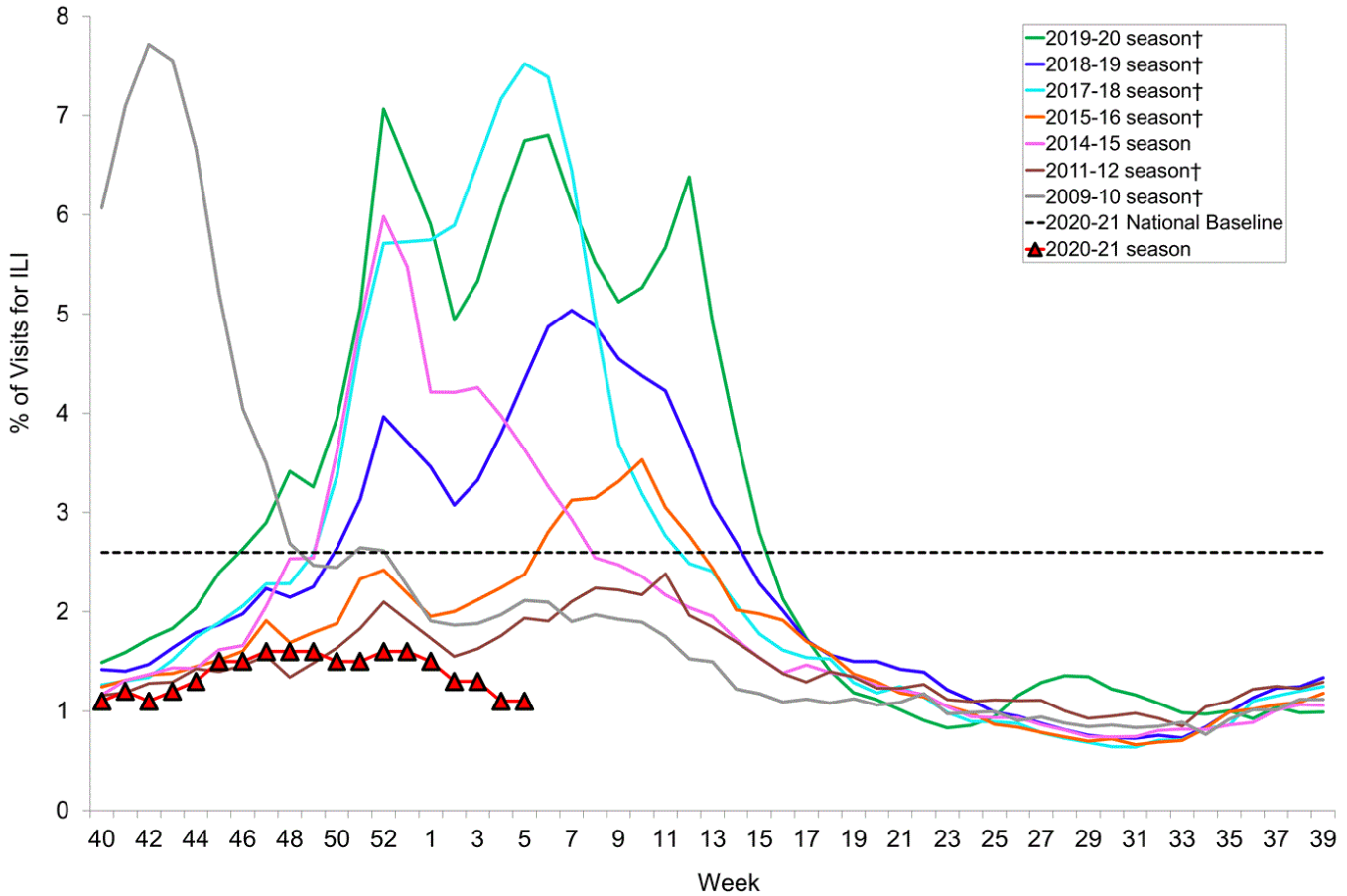




**Army Influenza-Associated Hospitalizations Reported in DRSi by Onset Week**



**Percentage of Visits for Influenza-like Illness (ILI) Reported by the U.S. Outpatient Influenza-like Illness Surveillance Network (ILINet), Weekly National Summary, 2020-2021 and Selected Previous Seasons**



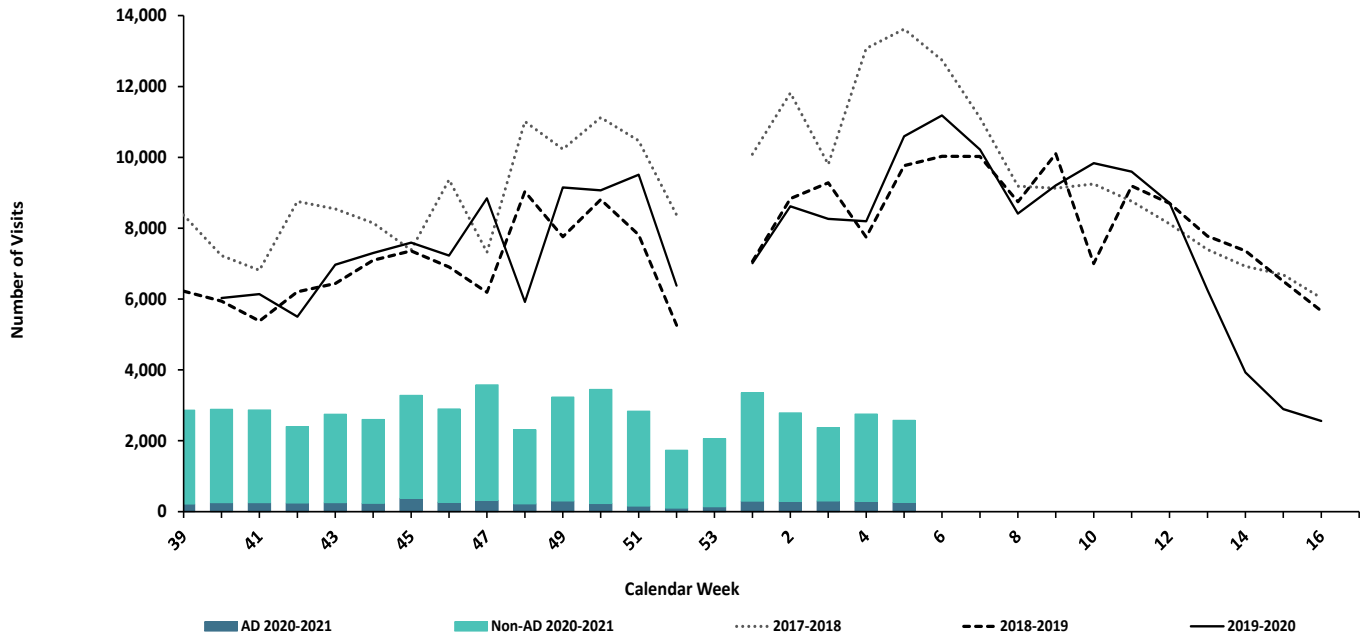
†These seasons did not have a week 53, so the week 53 value is an average of week 52 and week 1.

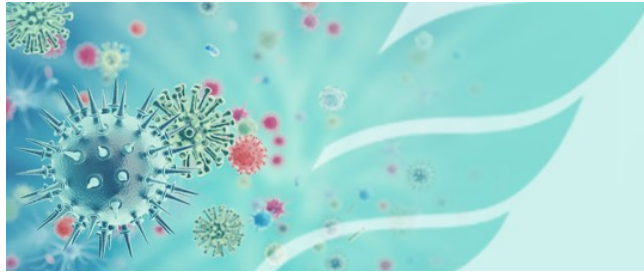
Source: Centers for Disease Control and Prevention (CDC)





**ESSENCE Weekly Outpatient Clinic Visits for Influenza-like Illness**  
*Army MTFs, All Services, 2017-2021*



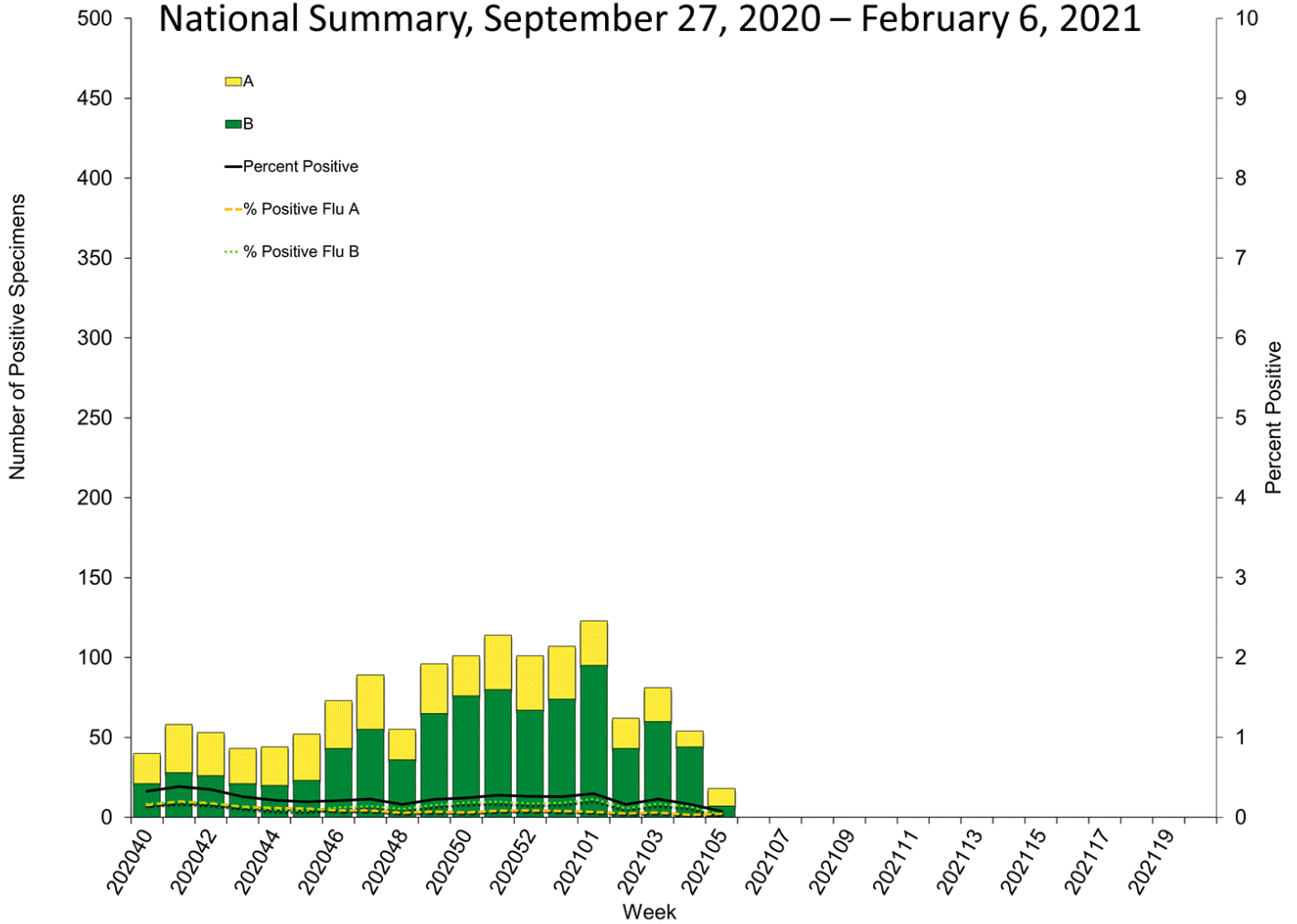


U.S. Army Public Health Center

# Army Influenza Activity Report

Week ending 6 February 2021 (Week 5)

Influenza Positive Tests Reported to CDC by U.S. Clinical Laboratories, National Summary, September 27, 2020 – February 6, 2021



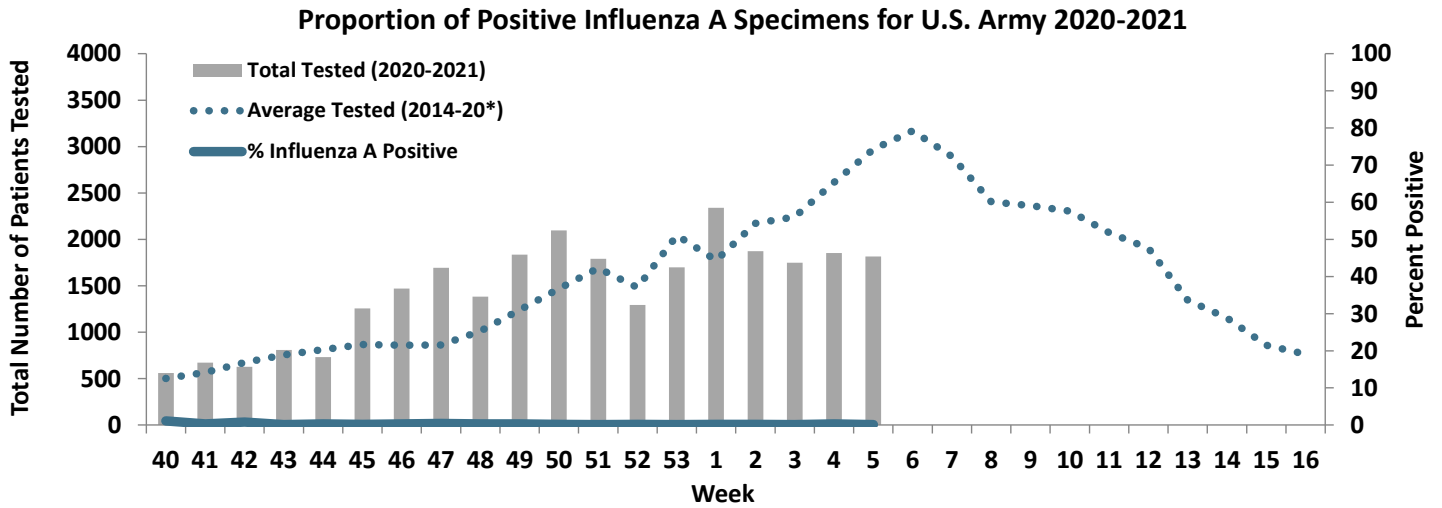
Source: Centers for Disease Control and Prevention (CDC)



U.S. Army Public Health Center

# Army Influenza Activity Report

Week ending 6 February 2021 (Week 5)



\*2014/2015 influenza season - 2019/2020 influenza season